

B-TUBULIN PAB

β-Tubulin Polyclonal Antibody

Cat. #: 21089

Gene Symbol: TUBB

Description: Anti-β-Tubulin Rabbit Polyclonal Antibody

Background: There are five members of the tubulin family (α , β , γ , δ , and ϵ). The most common members are α and β tubulins which form heterodimers as the basic structural unit of microtubules.

Immunogen: A synthetic peptide from the internal region of human β -tubulin protein

Applications: ELISA, WB, IHC, IP

Recommended Dilutions:

ELISA: 1:100–1:5000

WB: 1:100–1:1000

IHC: 1:50–1:100

Concentration: 0.2 mg/ml

Host Species: Rabbit

Format: Liquid

Clonality: Polyclonal

Isotype: IgG

Purity: Purified from serum

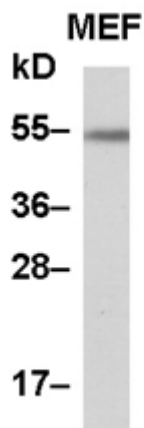
Preservative: No

Constituents: PBS (without Mg^{2+} and Ca^{2+}), pH 7.4, 150 mM NaCl, 50% glycerol

Species Reactivity: β-Tubulin antibody recognizes β-tubulin proteins from vertebrates.

Storage Conditions: Store at $-20^{\circ}C$. Avoid repeated freezing and thawing

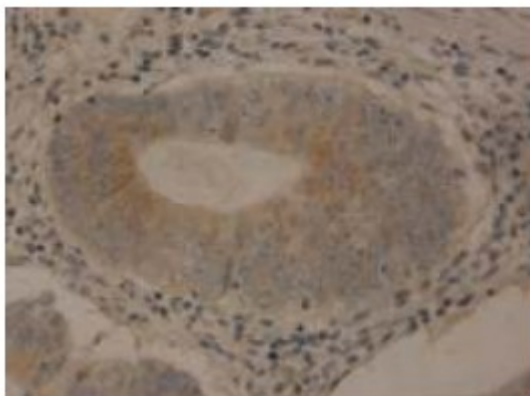
Western blot:



WB: anti-TUBB pAb

MEF whole-cell lysate was used for Western blot with anti- β -tubulin polyclonal antibody (Cat # 21089).

Immunohistochemistry:



Immunohistochemical staining of formalin-fixed paraffin-embedded colon carcinoma using the affinity purified Anti- β -tubulin polyclonal antibody (Cat# 21089) with a 1:50 dilution.