

B-TUBULIN PAB**β-Tubulin Polyclonal Antibody****Cat. #:** 21089**Gene Symbol:** TUBB**Description:** Anti-β-Tubulin Rabbit Polyclonal Antibody**Background:** There are five members of the tubulin family (α , β , γ , δ , and ϵ). The most common members are α and β tubulins which form heterodimers as the basic structural unit of microtubules.**Immunogen:** A synthetic peptide from the internal region of human β -tubulin protein**Applications:** ELISA, WB, IHC, IP**Recommended Dilutions:**

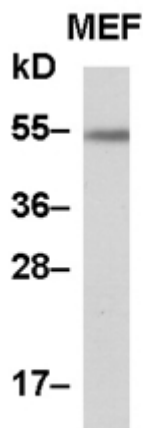
ELISA: 1:100–1:5000

WB: 1:100–1:1000

IHC: 1:50–1:100

Concentration: 0.2 mg/ml**Host Species:** Rabbit**Format:** Liquid**Clonality:** Polyclonal**Isotype:** IgG**Purity:** Purified from serum**Preservative:** No**Constituents:** PBS (without Mg^{2+} and Ca^{2+}), pH 7.4, 150 mM NaCl, 50% glycerol**Species Reactivity:** β-Tubulin antibody recognizes β-tubulin proteins from vertebrates.**Storage Conditions:** Store at -20°C . Avoid repeated freezing and thawing

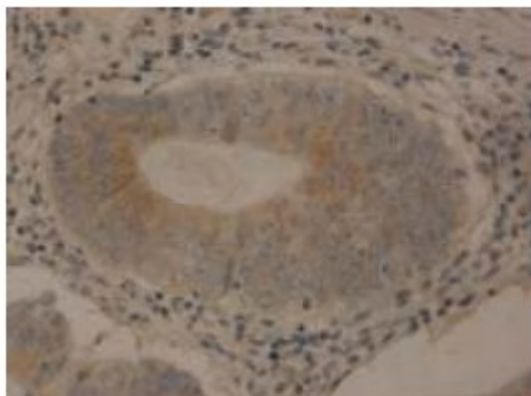
Western blot:



WB: anti-TUBB pAb

MEF whole-cell lysate was used for Western blot with anti- β -tubulin polyclonal antibody (Cat # 21089).

Immunohistochemistry:



Immunohistochemical staining of formalin-fixed paraffin-embedded colon carcinoma using the affinity purified Anti- β -tubulin polyclonal antibody (Cat# 21089) with a 1:50 dilution.