

KLRG1 MAB (ULVIPRUBART MAB)

Cat.#: 28153

Product Name: Anti-KLRG1(Ulviprubart) Monoclonal Antibody

Synonyms: 2F1;CLEC15A;MAFA;MAFA-2F1;MAFA-L;MAFA-LIKE

Description: Anti-KLRG1(ulviprubart) Monoclonal Antibody

Background: Research grade biosimilar. Not for use in therapeutic or diagnostic procedures for humans or animals.

Applications: Flow Cyt

Recommended Dilutions: Flow Cyt 1:100

Host Species: Humanized

Isotype: IgG1(E239D, M241L)

Purification: Purified from cell culture supernatant by affinity chromatography

Species Reactivity: Human KLRG1

Constituents: Lyophilized from sterile PBS, pH 7.4. 5 % – 8% trehalose is added as protectants before lyophilization.

Storage & Shipping: Store at -20°C to -80°C for 12 months in lyophilized form. After reconstitution, if not intended for use within a month, aliquot and store at -80°C (Avoid repeated freezing and thawing).

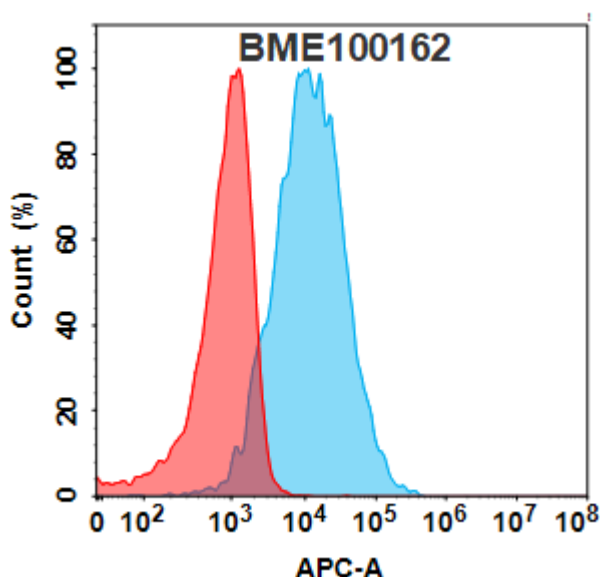


Figure 1. Flow cytometry analysis with 1µg/mL Anti-KLRG1(ulviprubart biosimilar) mAb (28153) on Expi293 cells transfected with Human KLRG1 protein (Blue histogram) or Expi293 transfected with irrelevant protein (Red histogram).

