

VIMENTIN MAB

Vimentin Monoclonal Antibody

Cat. #: 26054

Gene Symbol: VIM

Description: Anti-Vimentin Mouse Monoclonal Antibody

Background: Vimentin is an intermediate filament protein found in various non-epithelial cells, especially in mesenchymal cells. It is often used as a marker of mesenchymally-derived cells or cells undergoing an epithelial-to-mesenchymal transition (EMT) during both normal development and metastatic progression.

Immunogen: A synthetic peptide from the internal region of human vimentin protein.

Applications: ELISA, WB, IHC, IP

Recommended Dilutions:

ELISA: 1:1000-1:5000

WB: 1:100-1:1000

IHC: 1:50-1:100

Concentration: 1 mg/ml

Host Species: Mouse

Format: Liquid

Clonality: Monoclonal

Isotype: IgG

Purity: Purified from ascites

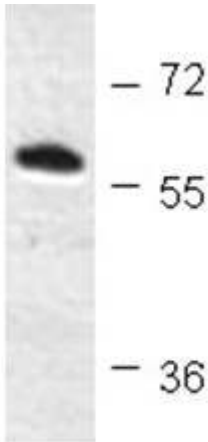
Preservative: No

Constituents: PBS (without Mg^{2+} and Ca^{2+}), pH 7.4, 150 mM NaCl, 50% glycerol

Species Reactivity: Anti-vimentin antibody recognizes vimentin of vertebrates.

Storage Conditions: Store at $-20^{\circ}C$. Avoid repeated freezing and thawing

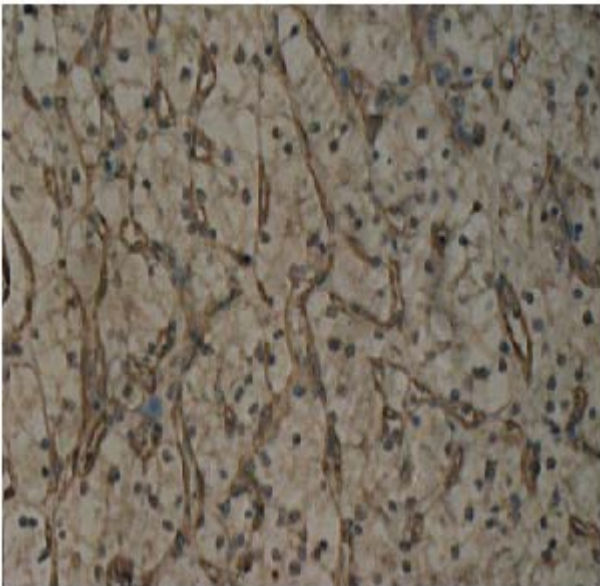
Western blot:



WB:Anti-Vimentin

Western blot analysis of recombinant vimentin protein. Purified His-tagged vimentin protein (Cat. #10190) was blotted with Anti-vimentin monoclonal antibody (Cat. # 26054).

Immunohistochemistry:



Immunohistochemical analysis of paraffin-embedded human renal cancer tissue with anti-vimentin monoclonal antibody (Cat. #26054). Tissue samples were fixed with formaldehyde and blocked with 1% serum for 15 min at 37 °C. Antigen retrieval was by heat mediation in citrate buffer (pH6). Samples were then incubated with primary antibody (1:100 dilution) overnight at 4°C. A HRP-conjugated Goat anti-mouse IgG (1:50 dilution) was used as secondary antibody.