

ROR1 MAB (ZILOVERTAMAB)

Cat.#: 28076

Product Name: Anti-ROR1 (Zilovertamab) Monoclonal Antibody

Synonyms: ROR1;TRKR1

Description: Anti-ROR1 (zilovertamab) Monoclonal Antibody

Background: Research grade biosimilar. Not for use in therapeutic or diagnostic procedures for humans or animals.

Applications: ELISA; Flow Cyt

Recommended Dilutions: ELISA 1:5000-10000; Flow Cyt 1:100

Host Species: Humanized

Isotype: IgG1

Purification: Purified from cell culture supernatant by affinity chromatography

Species Reactivity: Human ROR1

Constituents: Lyophilized from sterile PBS, pH 7.4. 5 % – 8% trehalose is added as protectants before lyophilization.

Storage & Shipping: Store at -20°C to -80°C for 12 months in lyophilized form. After reconstitution, if not intended for use within a month, aliquot and store at -80°C (Avoid repeated freezing and thawing).

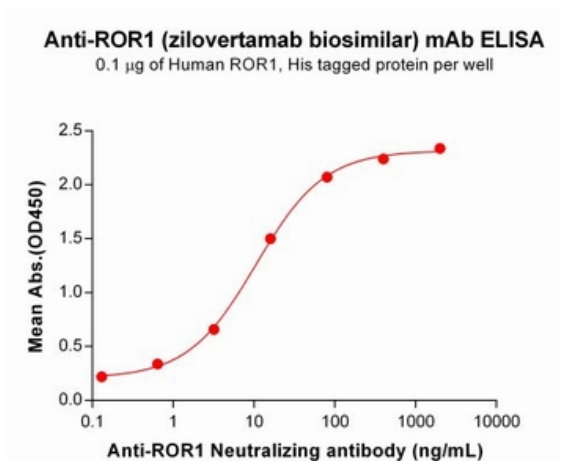


Figure 1. ELISA plate pre-coated by $2\ \mu\text{g}/\text{ml}$ ($100\ \mu\text{l}/\text{well}$) Human ROR1, His tagged protein 11267 can bind Anti-ROR1 Neutralizing antibody (28076) in a linear range of $0.64\text{--}16\ \mu\text{g}/\text{ml}$.

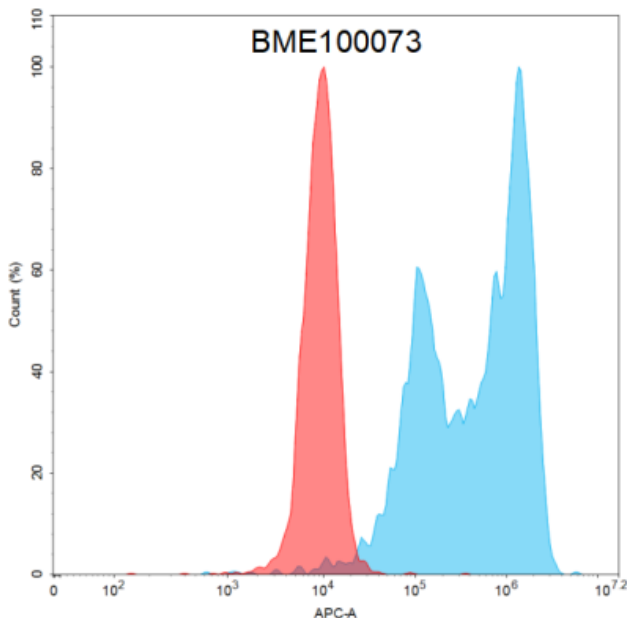


Figure 2. Flow cytometry analysis with Anti-ROR1 (zilovertamab biosimilar) mAb $15\ \mu\text{g}/\text{mL}$ on Expi293 cells transfected with Human ROR1 (Blue histogram) or Expi293 transfected with irrelevant protein (Red histogram).