

## CLDN18.2 MAB (ZOLBETUXIMAB) MAB

**Cat.#:** 28078

**Product Name:** Anti-CLDN18.2 (Zolbetuximab)

**Synonyms:** GC-182;MAB-362;MAB362;laudiximab

**Description:** Anti-CLDN18.2 (zolbetuximab biosimilar)

**Background:** Research grade biosimilar. Not for use in therapeutic or diagnostic procedures for humans or animals.

**Applications:** Flow Cyt

**Recommended Dilutions:** Flow Cyt 1:100

**Host Species:** Chimeric

**Isotype:** IgG1

**Purification:** Purified from cell culture supernatant by affinity chromatography

**Species Reactivity:** Human CLDN18.2

**Constituents:** Lyophilized from sterile PBS, pH 7.4. 5 % – 8% trehalose is added as protectants before lyophilization.

**Storage & Shipping:** Store at -20°C to -80°C for 12 months in lyophilized form. After reconstitution, if not intended for use within a month, aliquot and store at -80°C (Avoid repeated freezing and thawing).

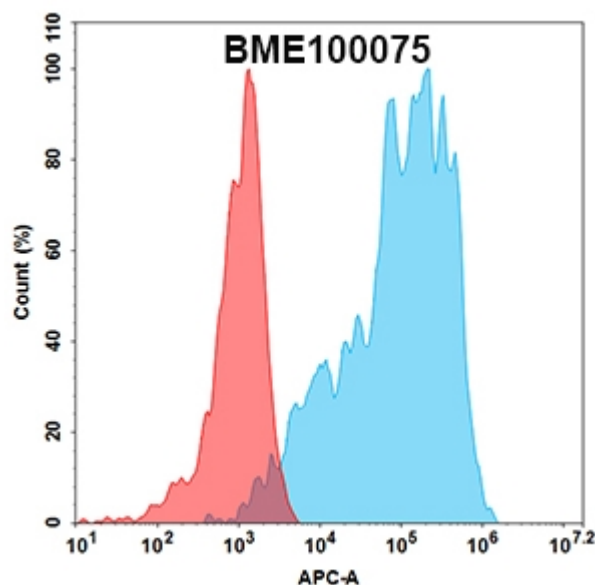


Figure 1. Flow cytometry analysis with Anti-CLDN18.2 mAb 1 µg/ml(zolbetuximab,28078 ) on Expi293 cells transfected with human CLDN18.2 (Blue histogram)or Expi293 transfected with CLDN18.1 (Red histogram).

